

Building on emerging opportunities



Our Mission : To provide the best possible care for the people of Barnsley and beyond at all stages of their life

Best for Patients and the Public

We will provide the best possible care for our patients and service users

- We will deliver our defined quality priorities for 2023/24 and achieve outstanding care by seeking, visiting and learning from exemplary organisations.
- We will embed research as core business across the Trust, provide staff with access to support, guidance and time to progress research aspirations and identify a location for a research facility.
- We will embed innovation across the Trust and foster a culture whereby day-to-day activities are supported by innovation at the core of our hospital's work.
- We will continue to use digital transformation to support new ways of working and build on solutions that enable our patients to digitally access information to support their own healthcare needs.
- We will develop our estate to include phase 2 of the Community Diagnostics Centre development and delivery of capital programme.



Best for People

We will make our Trust the best place to work

- We will continue to develop a caring, supportive, fair and equitable culture for all and create an organisational climate that supports Equality, Diversity and Inclusion.
- We will continue to ensure that we retain our staff and explore all opportunities to recruit to all vacancies across the Trust, including exploring innovative approaches where appropriate, and to ensure our organisation is correctly resourced.
- We will continue to enhance the health and wellbeing support (including psychological support) and evaluate our offer with regards to take up and impact for our staff.
- We will continue to develop our leaders and staff, trusting our staff to care for our patients to a high standard and supporting them to continuously improve their own work and the work of others.



Best for Performance

We will meet our performance targets and continuously strive to deliver sustainable services

- We will deliver the urgent care programme to support top quartile performance.
- As a minimum we will meet our national operational priorities for Elective, Diagnostics and Cancer care.
- We will take forward work to eliminate waste and maximise productivity across our services working with place partners to support this.
- We will deliver against our Board approved financial plan.
- We will develop a long-term financial plan which outlines the steps required to enable the Trust to get back to a recurrent balanced position in the next 3 to 5 years.

PROUD

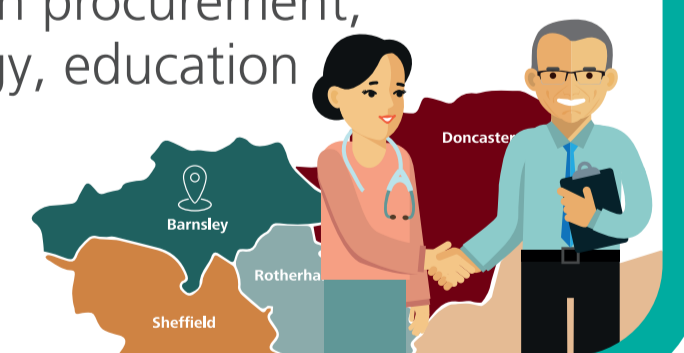
to care



Best Partner

We will work with partners within the South Yorkshire Integrated Care System to deliver improved and integrated patient pathways

- We will work with and support delivery of the Integrated Care Partnership 5-year strategy and Joint Forward Plan by continuing to work with partners at system level.
- We will support the delivery of the 2023/24 Acute Federation priorities.
- We will continue to work with Rotherham Hospital NHS Foundation Trust on the agreed partnership delivery plan.
- We will work with partners across the system to enhance our role as an anchor institution through development in procurement, environment and energy, education and employment.



Best for Place

We will fulfil our ambition to be at the heart of the Barnsley place partnership to improve patient services, support a reduction in health inequalities and improve population health

- We will continue to play a key role in the delivery of Barnsley Place priorities 2023/24.
- We will continue to be an organisation committed to improving population health and reduce health inequalities and deliver our action plan across:
 1. Holistic and preventative care
 2. Targeting all core services to greatest need
 3. Our role as an anchor institution and a partner in Place



Best for Planet

We will build on our sustainability work to date and reduce our impact on the environment

- We will build on existing work and exceed national expectation through delivery of the Trust's Green Plan, the Active Travel Plan and the formation of a new Decarbonisation Plan.



Our Values :

Respect

We treat people how we would like to be treated ourselves

Teamwork

We work together to provide the best quality care

Diversity

We focus on your individual and diverse needs